

Indian Centre For



Social Transformation

A Public Charitable Trust (Regd.)

(DIPPN ID No. KA/2018/0218715)



Comprehensive Digital Health Solution For Healthier Communities

Next-Gen User Centric Healthcare Network

 www.yolohealth.in



Access your **health data in **10 minutes**
before doctor consultation .**



About YoloHealth

we at HealthATM India Private Limited, Mumbai based well established & reputable HealthTech company in field of Manufacturing of HealthATM under the brand the name "Yolohealth"

Yolohealth is a technology venture, pioneering in the field of Health Internet of Things (IoT). It primarily focuses on building remote health monitoring and tele-consultation applications.



Yolohealth has built its flagship product "HealthATM, HealthBAG & Mobile Medical Unit", which combines instant diagnostics and tele-consultation into one integrated platform. It is an aggregation of the US FDA / EU CE / CDSCO certified medical In vitro diagnostic medical devices (IVD) and cloud-connected backend. It enables paramedical professionals to diagnose several health parameters and diseases, bringing technology-enabled primary and preventive healthcare services near to the masses.

We have supplied Medical Devices to various Government, Semi-Government, Public sectors and Non-Government Organisations in the last 10 years. We are also a verified Original Equipment Manufacturer (OEM) on the Government e-Marketplace (GeM) portal.

About HealthATM

"HealthATM" is an aggregation of US FDA / EU CE certified medical lot devices combined with HIPAA compliant software backend.

It enables Paramedical professionals to diagnose several health parameters and diseases, solving the problem of primary health service in rural/remote areas.

It is also a cloud connected platform that enables Tele-Consultation. Integrated Doctor consultation platform with doctor login and patient management.

- ◆ High-resolution Camera and Touch screen.
- ◆ More than 60 parameters checked in a few minutes.
- ◆ Integrated medicine dispenser.
- ◆ ABDM Compliance to create ABHA IDs
- ◆ Several AI-enabled health check-up solution (Coming soon).



Instant Diagnostic
& results



Live Doctor
Consultation



Digital Health
record

About HealthBAG

HealthBAG is a portable health solution containing various IoT-enabled medical devices for comprehensive diagnostics.

It enables healthcare providers to perform non-invasive and invasive tests, covering essential metrics like blood pressure, blood glucose, oxygen saturation, body composition, hemoglobin, HbA1c etc.

This device is HIPAA-compliant, cloud-connected, and can be used in remote or underserved areas, providing easy access to teleconsultation with real-time test results and instant prescriptions.

Its design allows for door-to-door health screenings, making it ideal for mobile healthcare services in hard-to-reach locations.



About Digital Portable X-ray



The Digital Portable X-ray with Artificial Intelligence (AI) is an innovative, cutting-edge solution designed to revolutionize diagnostic imaging. This advanced medical device combines the convenience of portability with the power of AI, enabling healthcare providers to deliver precise, efficient, and rapid diagnoses directly at the point of care.



Portability

Lightweight and transportable for use in hospitals, clinics, field settings, and home care.



AI-Powered Analysis

Assists in detecting anomalies, enhancing image quality, and providing real-time analysis.



High-Quality Imaging

Delivers high-resolution images with advanced sensors and processing.



Efficiency and Speed

Speeds up image acquisition and interpretation for faster diagnoses.



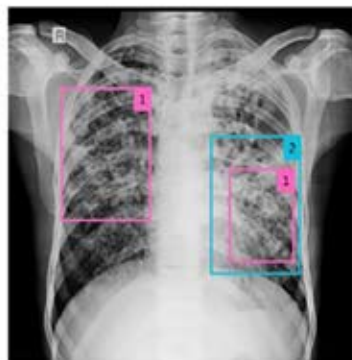
User-Friendly Interface

Simple controls suitable for all levels of medical professionals.

Why Choose This Technology?

With the integration of AI, healthcare professionals can significantly enhance diagnostic accuracy and improve patient outcomes. The portable design ensures flexibility and accessibility, breaking barriers to medical imaging in challenging locations. Embrace this innovative solution to deliver better, faster, and more reliable healthcare services.

Prompt: Identifying following pathologies in given Chest X-Ray (consolidation, Nodules, Blunting of CP Angle, Lobe collapse, deviation of trachea, migration of diaphragm, cavity, reticular fibrotic changes)



Numerous **nodular opacities**¹ of varying sizes in both lungs, Consolidatory changes with **air bronchograms**² - Indicates active infective aetiology.



Collapse of right upper lobe¹, **Rightward deviation of trachea**², **Cranial migration of right hemidiaphragm**³, **Cavity**⁴ and **Reticular fibrotic changes**⁵ indicates Old Pulmonary Tuberculosis.





Test Parameters

GENERAL BODY CHECKUP (16)



Height
Weight
Body Mass Index
Hydration
Fat%
Basal Metabolic Rating

Bone Mass
Muscle Mass
Visceral Fat
Metabolic Age
Muscle Quality Score

Systolic BP
Diastolic BP
Pulse Rate
Oxygen Saturation
Temperature

LIFESTYLE CHECKUP (5)



Blood Sugar
(Fasting Sugar
Random Sugar
Post Prandial Sugar)
Hemoglobin
HbA1c



URINE TESTS (10)



Glucose
Bilirubin
Ketone
Specific Gravity
Blood

PH
Protein
Urobilinogen
Nitrite
Leukocytes

CARDIAC CHECKUP (7)



12 Lead ECG
Lipid Profile
(Total Cholesterol
High-Density Lipoprotein
Low-Density Lipoprotein

Triglycerides
Non-HDL
HDL Ratio)

TELE-CONSULTATION (3)



Digital Stethoscope

Digital Otoscope

Digital Dermoscope

RAPID DIAGNOSTIC CHECKUP (20)



Pregnancy
HIV I & II
Malaria
Dengue
Chikungunya

Leptospira
Filariasis
Scrub Typhus
Hepatitis A
Typhoid

S.Typhi/Paratyphi Ag
Helicobacter Pylori
Troponin
Covid - 19 Ag
Fecal Occult Blood

TORCH Panel
(Toxoplasmosis
Rubella
Cytomegalovirus
HSV-1
HSV-2)

ADDITIONAL ADVANCED CHECKUP (29)



Lung Function Test
Fetal Heart Rate
Eye Checkup
Hearing Checkup
OAE
Alcohol Breath Analyser
Stress Assessment
Oral Checkup

WBC
(Total Leukocyte Count
Neutrophils
Lymphocytes
Monocytes
Eosinophils
Basophils)



CRP
PCT
RSV Ag
Strep A Ag
S. Pneumonia Ag
hs CRP
CK MB
NT proBNP

D Dimer
Beta - hCG
LH
TSH (Serum)
T4
fT4
TSH WS

About Y Health

World's Most Advanced Metabolic Platform



Monitor your glucose trends in real-time using our app.
Gain insights into how your diet and exercise routines affect your glucose levels with immediate, practical feedback.

These real-time prompts empower you to make informed decisions, helping you enhance and maintain better metabolic health.



Health Check-ups



News Article



Illness To Wellness joins hands with YoloHealth to elevate awareness on preventive healthcare. Through the health screening camps, we're championing early diagnosis and timely intervention for a better tomorrow.

CSR: 'Illness To Wellness' joins hands with YoloHealth to sensitise citizens about preventive healthcare solutions

By The CSR Journal - March 28, 2024

The importance of preventive healthcare cannot be overstated in today's world, which is increasingly grappling with a steep rise in lifestyle-induced diseases and lack of affordable and timely diagnosis. The 'Illness to Wellness' campaign, a national awareness programme aimed at promoting healthy living, in its endeavour to ensure healthier communities, has tied up with YoloHealth, a healthcare technology company, to sensitise the citizens on the importance of detecting potential health issues at an early stage.

Illness to Wellness campaign ties up with YoloHealth to create awareness of preventive healthcare

New Delhi: The importance of preventive healthcare cannot be overstated in today's world, which is increasingly grappling with a steep rise in lifestyle-induced diseases and a lack of affordable and timely diagnosis. The 'Illness to Wellness' campaign has tied up with YoloHealth.

To create awareness, Illness to Wellness is organising health camps in New Delhi across three days. The first camp is being held at Janpath Bhawan Market in association with the Janpath Traders Association, targeting nearly 200 people comprising shop owners, their employees and the general public. Two Yolo HealthATMs have been deployed for testing at the site.

'Illness To Wellness' & YoloHealth Generate Awareness

Two-day camp gave devotees and staff a chance to avail diagnostic facilities using the latest technology

Incorporated a holistic approach to ensure easy public access to primary and preventive healthcare services. Lifestyle-induced diseases are on the rise, in addition, the age of contracting many diseases which until recently were thought to afflict only those over 50 years of age, has also drastically reduced, leading to serious complications. It needs to be reinforced that many diseases can be prevented and/or controlled through regular testing.

With the objective of raising awareness about the overall benefits of timely and affordable testing, Illness to Wellness and YoloHealth held a two-day camp at Gurudwara Bangla Sahib on the 29th and 30th March, 2024 in which over 150 people were tested across 32 blood screening parameters.

Illness to Wellness, YoloHealth generate awareness about preventive healthcare solutions at Gurudwara Bangla Sahib

New Delhi, April 1 (IANS) Lifestyle-induced diseases are on the rise. In addition, the age of contracting many diseases which until recently were thought to afflict only those over 50 years of age, has also drastically reduced, leading to serious complications. It needs to be reinforced that many diseases can be prevented and/or controlled through regular testing. To raise awareness about the overall benefits of timely and affordable testing, Illness to Wellness and YoloHealth held a two-day camp at Gurudwara Bangla Sahib on March 29 and 30, in which over 150 people were tested across 32 blood screening parameters. The 'Illness to Wellness' campaign, a national awareness programme aimed at promoting healthy living, in its endeavour to ensure healthier communities, tied up with YoloHealth, a healthcare technology company, to sensitise the citizens on the importance of detecting potential health issues at an early stage.



Our Esteemed Clients



Govt. of Arunachal Pradesh



Lucknow Smart City



Aligarh Smart City



Cochin Smart Mission Limited



Saharanpur Smart City



Tech Mahindra
Tech Mahindra



Ahmedabad Municipal Corporation



Max Bupa Health Insurance



KMC Digital Hospital
KMC Hospital



Tata Img



SGPGI, Lucknow



NDMC
New Delhi Municipal Corporation



(UPSRTC) Uttar Pradesh
State Road Transport Corporation



Indian Railways



UPMSCL
Uttar Pradesh Medical Supplies Corporation Limited



Government of Zimbabwe



Essar Foundation



Apollo Munich



MetLife



Our Office

HealthATM India Pvt.Ltd.



Mumbai

📍 211, Woodrow Building,
Veera Desai Rd, Andheri West,
Mumbai, Maharashtra 400053

☎ 022- 46013836

Delhi

📍 A1/51, Block A 1, Nauroji
Nagar, Safdarjung Enclave,
New Delhi, Delhi 110029

☎ 011- 46580554

Lucknow

📍 3/1, Vishwash Khand, Near
Lohiya park chauraha Gomti
Nagar Lucknow, Uttar Pradesh-226010

☎ 0522- 3115827

Bangalore

📍 KEONICS, #29/A (E), 27th Main,
7th Cross, Sector 1, HSR Layout,
Bengaluru, Karnataka 560102

☎ +91 80 4120 1149



Your Comprehensive HealthCare Solution Please Ask us More!



Lets Talk



f @yolohealth



in @yolohealth



X @YoloHealth_In



ig @yolohealthin



yt @yolohealth

hello@yolohealth.in



+91 7400448203



www.yolohealth.in